

Optical Plus Galiso P/N 85-11-0077



- Features:**
- Adjustable Focus
 - Adjustable Light Intensity
 - 4x Magnification
 - Commonly used for inspection of SCUBA, Medical, SCBA, AFV, industrial Specialty Gases, and CO2
 - 360° rotation within the threads
 - Full vertical adjustment

Inspection Items



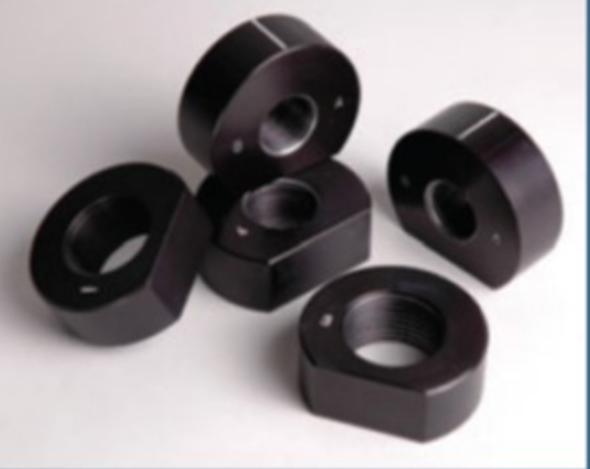
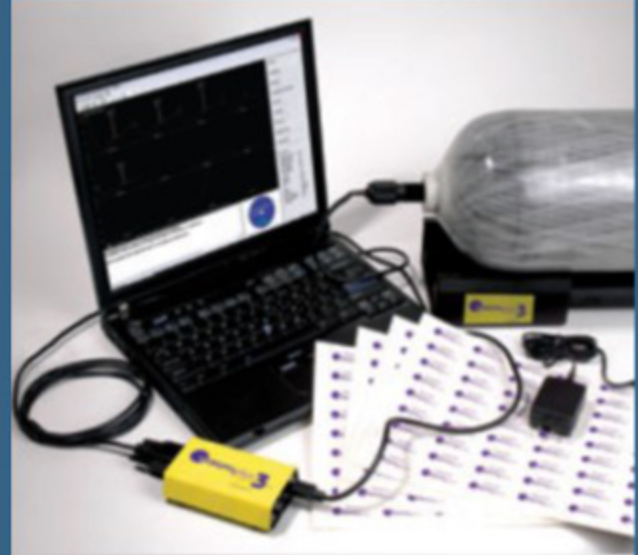
22 Ponderosa Ct
Montrose, CO 81401

www.galiso.com (800)854-3789

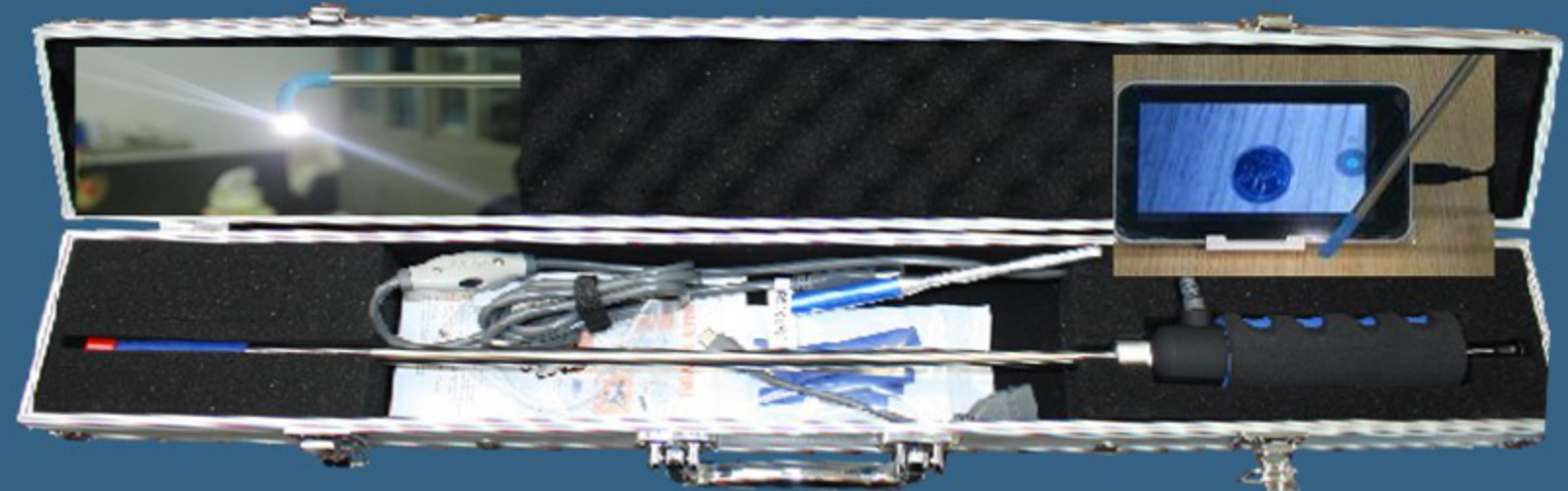


68-11-1750 1ea 7/16", 9/16", 5/8" OD 2x mirrors.

Visual Plus Galiso P/N 84-11-1100



Articulating USB Borescope 85-11-0013



68-41-3103B
Reference Pit Gauge



68-31-3106
Dial Pocket Pit Gauge,



EDDY CURRENT
Eddy Current Integration
Galiso Test Software Video

68-31-3105
Pit Gauge, Stainless
*Also available in Metric



ACETYLENE REQUALIFICATION KIT	ACETYLENE REQUALIFICATION KIT
Contents	Purpose(s) of Tool
CLEARANCE GAUGES	CLEARANCE GAUGES - MEASURE SPACE FILLER TO SHELL
0.041"	0.041" - BOTTOM FUSE PLUG GAUGE ⁽¹⁾
0.060"	0.060" - MC & B CYLINDERS, CENTER WELD WITH CaSi FILLER
0.080" ⁽¹⁾	0.080" - 24" LONG CYLINDERS, CENTER WELD WITH CaSi FILLER
0.084"	0.084" - 30" TO 42" LONG CYLINDERS, CENTER WELD WITH CaSi FILLER
0.090"	0.090" - 8 CYLINDERS OF ONE PIECE SHELL OR CHARCOAL FILLER
0.120"	0.120" - 24" LONG CYLINDERS OF ONE PIECE SHELL OR CHARCOAL FILLER
0.125"	0.125" - 30" TO 42" LONG CYLINDERS OF ONE PIECE SHELL OR CHARCOAL FILLER
6" FLEXIBLE STAINLESS STEEL SCALE	SCALE - TO MEASURE SIZE OF DAMAGE
MINI MAGNALITE AAA	FLASHLIGHT - TO VIEW INTO WELL
CREVICE PIT GAUGE	CREVICE PIT GAUGE - TO MEASURE CORROSION IN CREVICE
ROCKER PIT GAUGE	ROCKER PIT GAUGE - TO MEASURE DEPTH OF PIT
DENTAL MIRROR - 3/4"	MIRROR - TO VIEW CLEARANCE IN WELDING SIZE
DENTAL MIRROR - 1/2"	MIRROR - TO VIEW CLEARANCE IN B or MC
6" AWL (PROBE)	AWL - TO GENTLY PROBE FILLER FOR BREAKDOWN
NEEDLE NOSE PLIERS	PLIERS - TO REMOVE SCREEN & FELTS
PI TAPE - LUFKIN	PI TAPE - TO DETERMINE CYLINDER SIZE - DIAMETER x LENGTH
THORPE PIT GAUGE - IN LID OF KIT	PIT GAUGE - TO MEASURE DEPTH - PITS, CUTS, DENTS, ETC.
<small>(1) 0.084" GAUGE MAY BE USED IN LIEU OF 0.087"</small>	<small>(1) SEE G.A. PAMPHLET C-13 FOR DETAILS. (2) 13 PERMITS BOTTOM MEASUREMENT. CERTAIN CASES.</small>



Acetylene Requalification Kit
68-11-1756

Opti-lite

High Intensity LED Light for viewing inside cylinders before and after hydrostatic test.
No Bulbs to replace 25,000hr service life of LED



Drop Light

Optilite

Box
85-11-0030 LED

Illuminator Box
110v and 220v CE (90-263v)

*Kit of box and light guide available

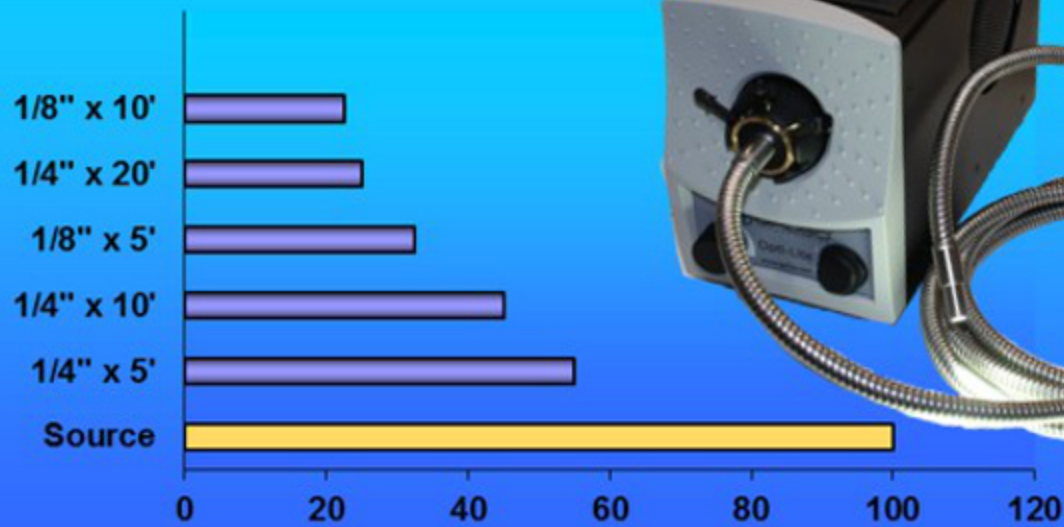


22 Ponderosa Ct
Montrose, CO 81401

www.galiso.com (800)854-3789

- Guides
- 85-11-0060
1/4" x 20'
 - 85-11-0061
1/8" x 5'
 - 85-11-0062
1/8" x 10'
 - 85-11-0063
1/4" x 5'
 - 85-11-0064
1/4" x 10'
 - 85-11-0066
1/8" x 5' Hypo Tube
 - 85-11-0088
1/8" x 10' Hypo Tube

% Light Transmission



1/4" SST Sheath



1/8" SST Sheath



1/8" hypo tube Silicone Sheath

Largest Outside Diameter



.5"



.375"



.2"